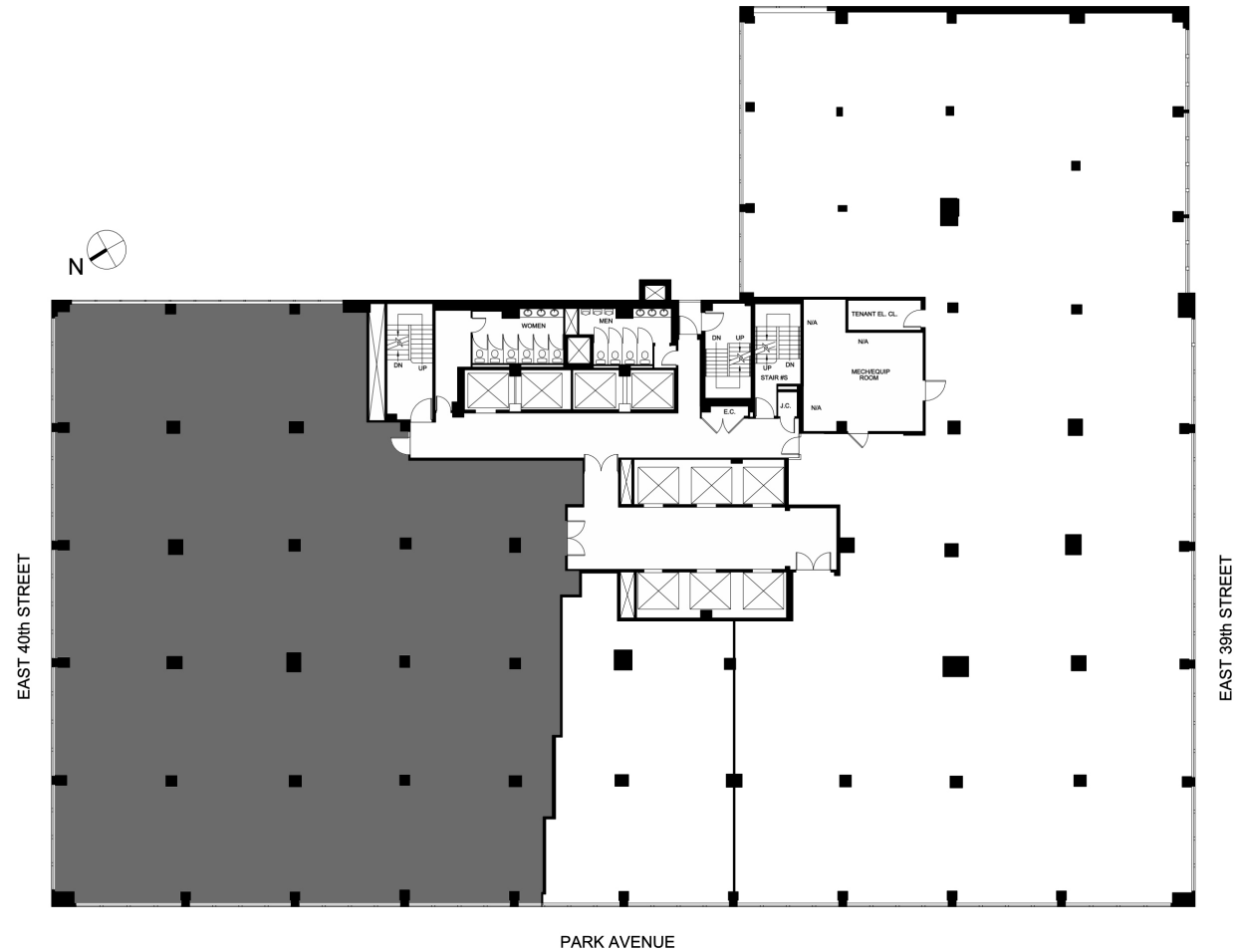




Partial 4th Floor
17,851 RSF
Core & Shell



PAUL GLICKMAN • 212.418.2646
Paul.Glickman@am.jll.com

DIANA BIASOTTI • 212.812.5751
Diana.Biasotti@am.jll.com

KRISTEN MORGAN • 212.812.6043
Kristen.Morgan@am.jll.com



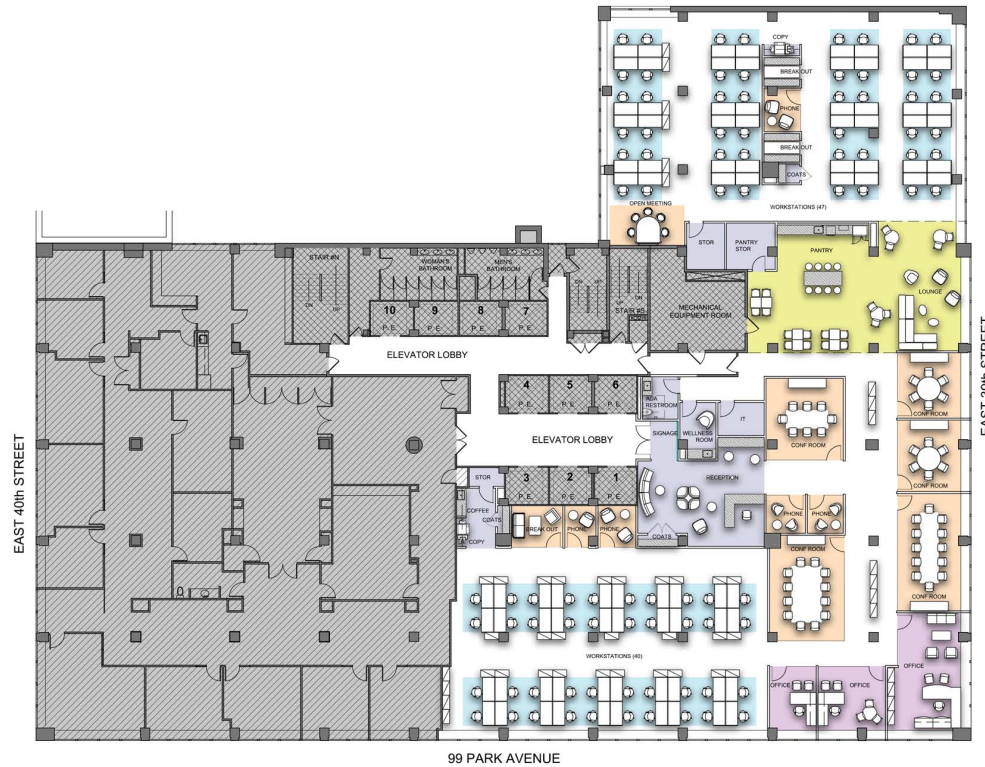
99 Park Avenue
New York, New York 10016

99

Partial 4th Floor 17,851 RSF Test Fit- Workstation Intensive

LEGEND:

TYPE	QTY
OFFICES	
OFFICE	3
WORKSTATIONS	
BENCHING	87
COLLABORATION	
LARGE CONFERENCE (10-14 PPL)	2
MEDIUM CONFERENCE (6-8 PPL)	3
OPEN MEETING	1
BREAK OUT	3
PHONE ROOM	5
AMENITIES	
PANTRY	1
LOUNGE	1
COFFEE BAR	1
SUPPORT & STORAGE	
RECEPTION	1
IT ROOM	1
ADA REST ROOM	1
WELLNESS ROOM	1
COPY/PRINT STATION	2
COAT CLOSET	3
STORAGE CLOSET	3
TOTAL	
HEAD COUNT	91



PAUL GLICKMAN • 212.418.2646
Paul.Glickman@am.jll.com

DIANA BIASOTTI • 212.812.5751
Diana.Biasotti@am.jll.com

KRISTEN MORGAN • 212.812.6043
Kristen.Morgan@am.jll.com



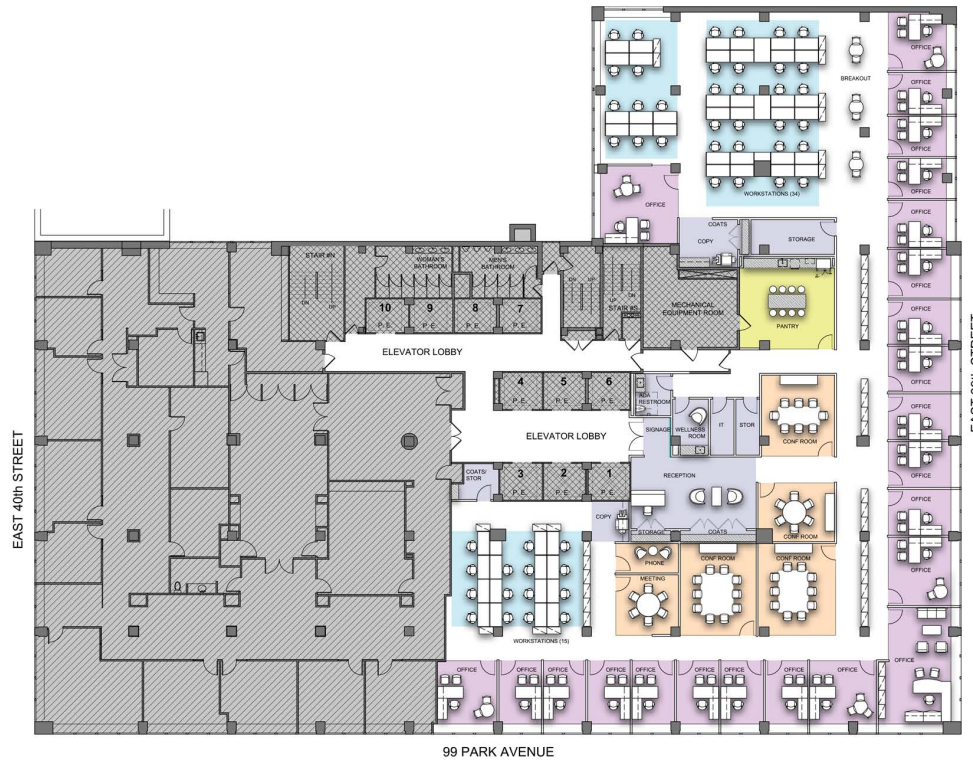
99 Park Avenue
New York, New York 10016

99

Partial 4th Floor 17,851 RSF Test Fit- Office Intensive

LEGEND:

TYPE	QTY
OFFICES	
OFFICE	23
WORKSTATIONS	
BENCHING	51
COLLABORATION	
LARGE CONFERENCE (10-14 PPL)	2
MEDIUM CONFERENCE (6-8 PPL)	3
PHONE ROOM	1
AMENITIES	
PANTRY	1
COFFEE BAR	--
SUPPORT & STORAGE	
RECEPTION	1
IT ROOM	1
ADA REST ROOM	1
WELLNESS ROOM	1
COPY/PRINT STATION	2
COAT CLOSET	3
STORAGE CLOSET	3
TOTAL	
HEAD COUNT	75



PAUL GLICKMAN • 212.418.2646
Paul.Glickman@am.jll.com

DIANA BIASOTTI • 212.812.5751
Diana.Biasotti@am.jll.com

KRISTEN MORGAN • 212.812.6043
Kristen.Morgan@am.jll.com



99 Park Avenue
New York, New York 10016